

TOP

5

REASONS TO GET A LEGAL ENTITY IDENTIFIER

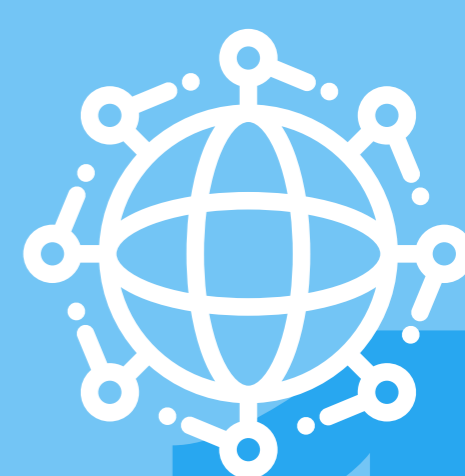
With more than 2 million organisations, trusts and funds now with Legal Entity Identifiers (LEI), the LEI is firmly established as the global digital code to identify 'who is who', and 'who owns whom'.



HERE ARE SOME OF THE KEY REASONS YOU SHOULD REGISTER AN LEI FOR YOUR ORGANISATION TODAY.

THE LEI CODE IS THE MOST IMPORTANT STANDARDISED DIGITAL, GLOBAL IDENTIFIER.

- The LEI was created as a result of the 2008 financial crisis to deliver strong organisation identity for counter-parties.
- LEIs protect citizens during market crises by providing transparency into dependencies and risk exposure.
- Endorsed by the G20 and the Financial Stability Board (FSB), and regulated by the Global LEI Foundation (GLEIF).



THE LEI ENABLES COMPLIANT, CROSS-BORDER DIGITAL AND REAL-WORLD TRANSACTIONS.

- **NO LEI, NO TRADE** : non-compliance with certain regulations risks fines and no-trade penalties.
- LEIs are made mandatory by MiFID, MiFIR, Dodd-Frank Act, EMIR and many other regulations.
- New regulations mandating LEI inclusion go live every month - currently 116 regulations utilise LEIs.
- LEIs improve the ability to access finance, especially SMEs.



THE LEI REDUCES FRAUD BY ENABLING TRUST IN YOUR ORGANISATION'S LEGITIMACY AND REAL IDENTITY.

- Data providers and credit check organisations utilise LEIs and look for the LEI Conformity Flag in Know-Your-Customer (KYC) onboarding, and client identity refresh processes.
- LEIs will be added to the Verifiable LEI (vLEI) - a digitally verifiable credential based on self-sovereign identity (SSI) to enable automated trusted identity verification.
- Missing LEIs cause disruptions in business activities, deals, and transactions.
- LEIs are the primary connector between all the regional and private sector organisation identifiers.



LEI RECORDS CONTAIN VALUABLE, ACCURATE, & TRANSPARENT IDENTITY DATA ATTRIBUTES.

- Both humans and machines can verify the LEI.
- The entire LEI database is open and searchable via web, full dataset download, or API.
- LEIs provide up-to-date organisation identity.
- The LEI is the only identifier to connect parent and children organisations.
- LEIs support multiple languages for names and addresses.
- Achieving the LEI Conformity Flag assures relying parties the entity reference data is accurate and trustworthy.



LEI CODES ENABLE ONLINE APPLICATIONS TO UTILISE YOUR STRONG ORGANISATION IDENTITY.

- LEIs are included in electronic / digital signatures, documents, press releases, site seals, QR codes, bar codes, and more.
- Human & machine-readable XBRL Digital Signatures are linked to LEI for permanent certainty about integrity of document such as annual reports and financial statements.
- LEIs are now included in x.509 digital certificates.
- LEIs will be included in SWIFT transactions in the new ISO payment standard.



REGISTER YOUR LEI WITH  **RapidLEI** TODAY.

With our automated issuance, you'll have a registered LEI code in just a few minutes.

rapidlei.com